



济南中船设备有限公司

Jinan ZhongChuan Equipment Co.,Ltd.



济南中船设备有限公司

Jinan ZhongChuan Equipment Co.,Ltd.



济南中船设备有限公司

地址:山东省济南经济开发区(长清区)经十西路沃德大道916号
邮编: 250306
电话: 0531-87230000, 0531-66852727, 0531-66582929
传真: 0531-87392222
邮箱: info@zc1944.com
网址: www.zc1944.com

Jinan ZhongChuan Equipment Co., Ltd.
Address: No. 916 Wode Avenue, Changqing, Jinan, Shandong 250306 China
T: 86-531-66582001, 86-531-66582002
86-531-66582006, 86-531-66582008
F: 86-531-87392222
info@zc1944.com
www.zc1944.com



世界工业分秒前行，我们的部件值得信赖！

济南中船设备有限公司，是一家科技型制造企业，致力于为全球工业提供值得信赖的解决方案。是中国船舶工业CSEMC成员单位。

公司专注于工业领域精密零部件及高强度特种紧固件的研发与制造，产品主要应用于清洁能源、中低速发动机、轨道及机车内燃机、涡轮机械、重卡工程矿机、油气开采等领域。

目前服务于戴姆勒，通用电气，卡特彼勒，曼恩能源，西屋制动，Wartsila，现代重工，中国船舶，潍柴，洋马等等诸多世界500强及全球知名企业。

公司生产设备精良、检测设备齐全，具备AS 9100D、ISO 9001:2015、IATF 16949:2016、ISO 14001、ISO 45001、ISO/IEC 17025、NADCAP HT & NDT等认证或资质。并得到CCS、DNV • GL、BV、ABS、LR、NK等船级社的认可。

济南中船设备有限公司，以大道匠心的境界和脚踏实地的作风，誓做值得信赖的工业部件及服务供应商，为世界工业安全保驾护航！

INDUSTRIES TRUST US

Jinan ZhongChuan Equipment Co., Ltd. is a technology-based manufacturing company dedicated to providing reliable solutions for global industries. The company is a member of CSEMC.

We focus on the R&D and manufacturing of industrial precision machining parts & high strength special fasteners, which are mainly applied for industries like clean energy, diesel engine, rail & locomotive, turbine machinery, heavy vehicle, construction and mining equipment, oil & gas, etc.

Our products and services are enjoyed by many famous partners including Daimler, GE, Caterpillar, MAN Energy Solutions, Wabtec, Wartsila, HHI, CSSC, Weichai and Yanmar, etc.

With state-of-the-art manufacturing equipment and the most advanced testing labs, our plant have been certified with AS 9100D, ISO 9001:2015, IATF 16949:2016, ISO 14001, ISO 45001 and ISO/IEC 17025, NADCAP HT & NDT etc. Our products have been awarded with certificates issued by classification societies like CCS, DNV • GL, BV, ABS, LR & NK, etc.

Jinan ZhongChuan Equipment Co., Ltd. is always in the light of the principle of the trustworthiness, practical style, with ingenious and dedicated spirit, to be a reliable supplier of industrial components and services, to protect the world's industrial safety!

我们的业务始于

Our business started in 1994.

1994年

致力于工业 **精密零部件** 及 **高强度紧固件** 的制造

Manufacturing of industrial precision parts & high strength fasteners is our core business.

服务于诸多世界 **500强** 客户，他们信赖我们的质量

Our quality is trusted by many customers listed in Fortune Global 500.

现代化厂区面积

Now we are working in new facility with area of 864,000 sq.ft..

800000m²

主要应用行业

清洁能源

发动机零部件

动力及传动，水处理

轨道交通，重吊

重卡，工程矿机

油气

Main served industries

Clean energy

Diesel engine parts

Parts for power & transmission, Water handling

Rail & locomotives, Heavy lift

Heavy truck, Construction & Mining

Oil & Gas





400 余名受过良好教育及培训的同事快乐地在一起工作。
We have about 400 well-educated and trained employees working together happily.

我们的技术及质管团队经验丰富，平均行业工龄在 **12年** 以上。
We have a professional R&D and quality control team with more than 12 years' experience in average.

我们践行 **以人为本**，遵循完整的职业健康与安全体系。
We follow a whole system of Occupational Health & Safety.





先进、完备的加工设施和实验室(ISO 17025认证)

State of The Art Manufacturing Facilities and Testing Lab (ISO/IEC17025 Accredited)



硬度检测 Hardness test (USA)
拉力实验机 Tensile test equipment

三坐标测量设备 CMM
金相分析 Metallographic inspection & analysis (Germany)



化学成分分析 Chemical analysis equipment (Germany)
冲击实验机 Impact test equipment

扭矩实验机 Torque tension test equipment (Switzerland)
全自动轮廓仪 Automated contour measuring unit (Germany)



- 热锻、冷锻
- 热处理
- 全自动表面处理线

Hot forging & cold forming
Heat treatment
Surface treatment line



- 数控车削中心
- 精磨
- 螺纹滚压、攻牙

CNC, machining center & turning center
Precision grinding
Thread rolling & tapping



- 塔筒紧固件 Tower flange bolt assemblies
- 风能紧固件 Fasteners for wind power





- 叶片螺栓/螺套 Blade studs / Bushings
- 机舱紧固件 Nacelle fasteners
- 耐磨销 Wear-resisting dowel pins

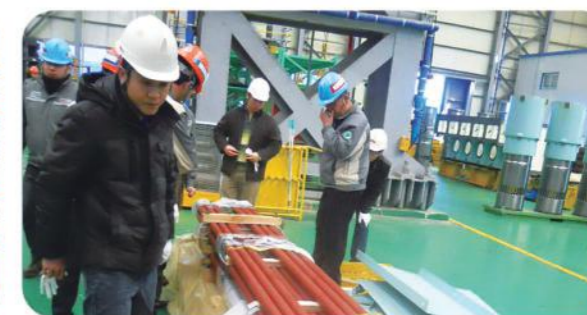




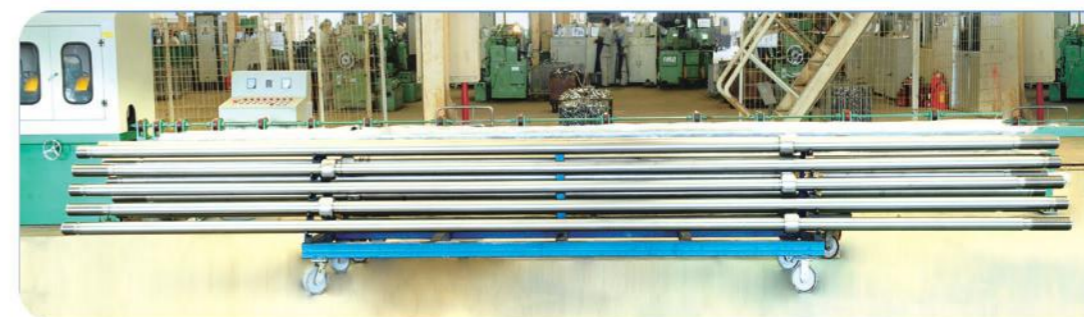
中低速柴油机配件

Parts for Diesel Engine

- | | |
|---------|-------------------|
| ① 十字头 | Crosshead |
| ② 联轴器螺栓 | Coupling bolt |
| ③ 联轴器螺母 | Castle nut |
| ④ 液压螺母 | Hydraulic nut |
| ⑤ 发动机组件 | Engine components |



● 世界首台5RT-flex50DF双燃料低速机点火仪式
Worldwide first 5RT-flex50DF customer day



● 贯穿螺栓 Stay bolt



①



②



③



④



⑤



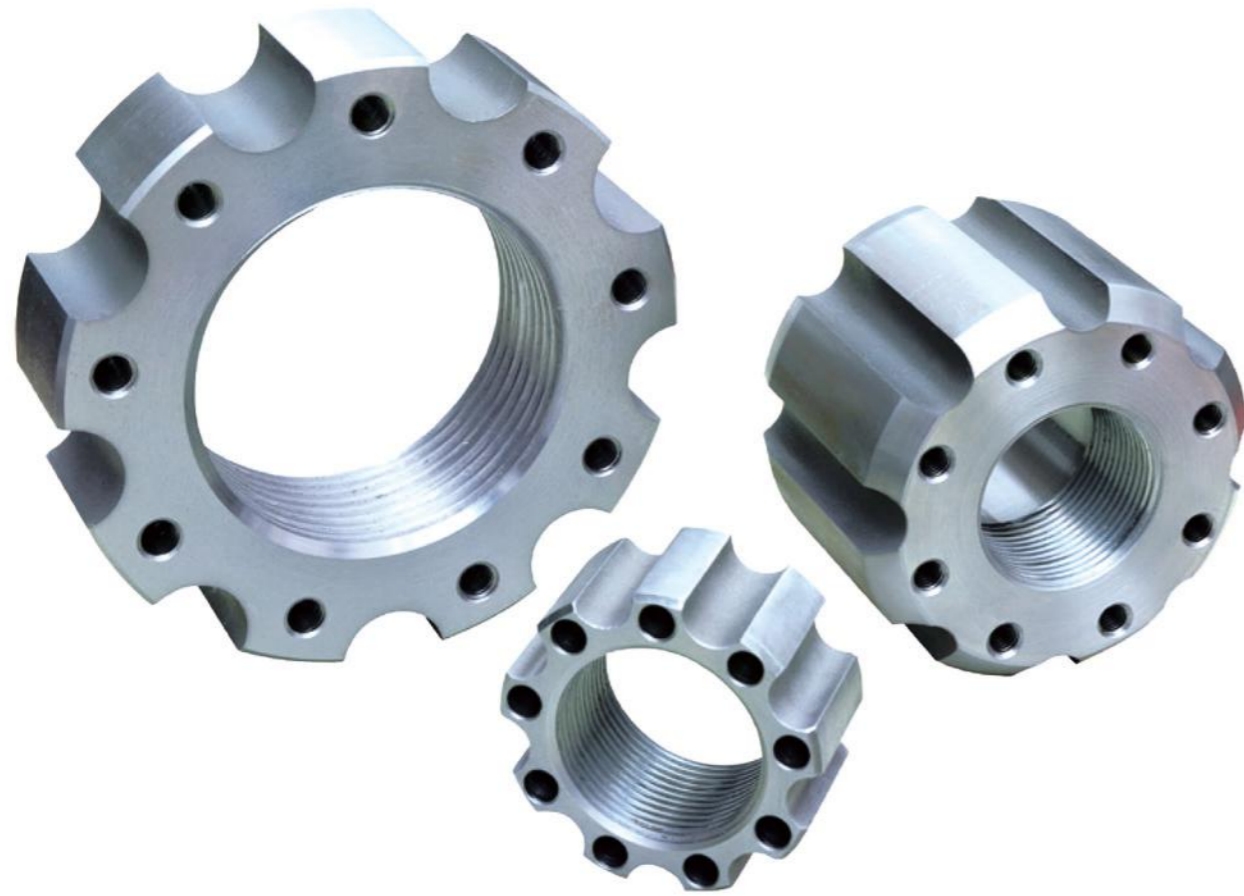
- 连杆螺栓 Connecting rod bolt
- 缸盖螺栓 Cylinder head bolt
- 主轴承螺栓 Main bearing bolt/stud
- 齿条 Control rack




中低速柴油机配件
 Parts for Diesel Engine

- 法兰 Flange
- 活塞销 Piston pin
- 挺杆、气阀顶套、齿轮缘 Tappet barrel, Gear rim
- 摇臂轴等组件 Rocker shaft, and other component
- 液压拉伸器 Hydraulic tightening device





动力及传动、水处理
Power & Transmission, Water Handling

- 工业泵配件 Parts for industrial pumps
- 涡轮机械部件 Components for turbines
- 机械传动配件 Parts for mechanical transmission






轨道交通、重吊
 Rail & Locomotive, Heavy Lift

- 机车引擎部件 Components for locomotive engine
- 高铁紧固件 Fasteners for high speed rail
- 起重设备配件 Parts of heavy lift






重卡、工程矿机
 Heavy truck, Construction & Mining

- 重卡紧固件 Fasteners for heavy truck
- 矿机、工程机械配件 Parts for construction & mining equipment





油气
Oil & Gas

- 阀杆 Valve rod
- 耐蚀紧固件 Anti-corrosion fasteners

